



19 Wilbur Street
Lynbrook, NY 11563

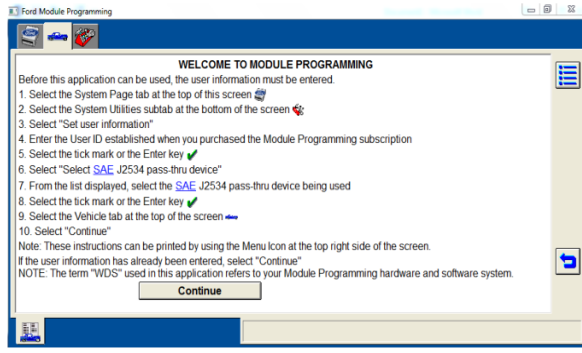
Phone No. (516) 766-2223
Fax No. (347) 475-1540

FORD

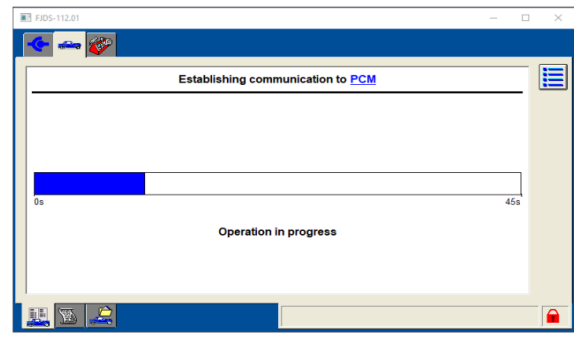
Parameter Reset Instructions

For Ford FJDS and Ford IDS

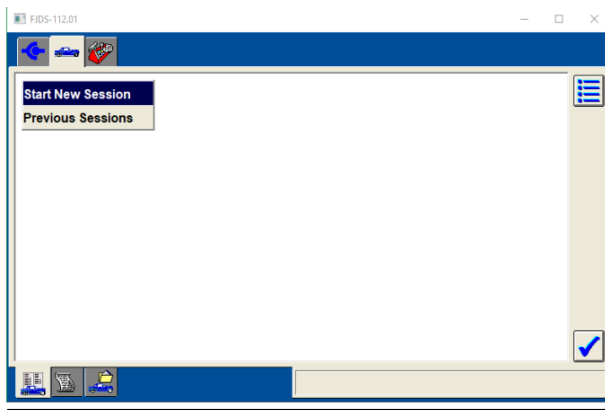
1. Start the ignition in RUN position while the engine is OFF. Press continue.



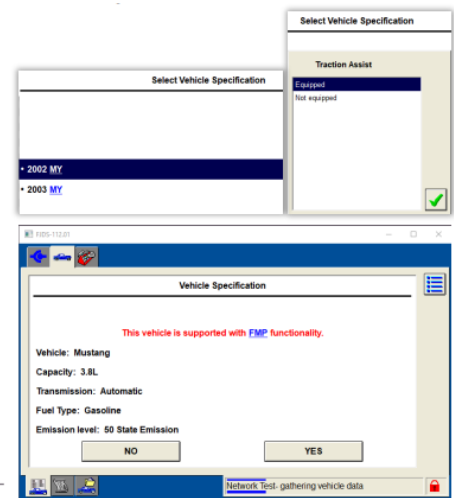
4. A loading bar will appear which should not take longer than 30 seconds to connect the Engine Control Module



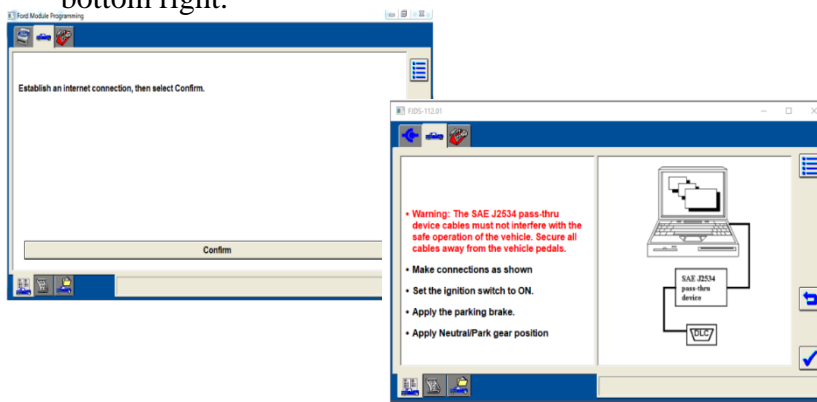
2. Select the Start New Session.



5. Select your vehicle's specifications if prompted. Your vehicle's information will show. For example, this is connected to a 2002 Ford Mustang. If the information shown is correct, click YES.



3. Press the confirm button and then press the check mark located in the bottom right.



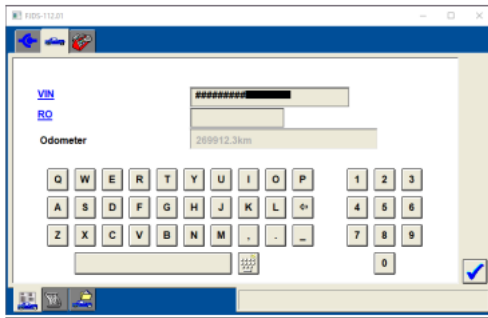


FLAGSHIP ONE

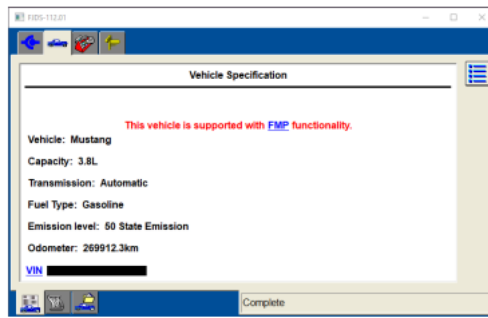
19 Wilbur Street
Lynbrook, NY 11563

Phone No. (516) 766-2223
Fax No. (347) 475-1540

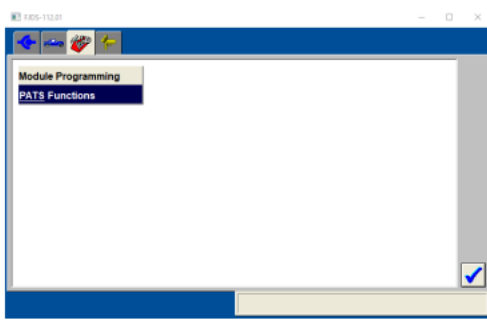
6. The next page will show a readout of your Vehicle Identification Number (VIN) and your odometer reading. Once accuracy is confirmed, click the bottom right check mark.



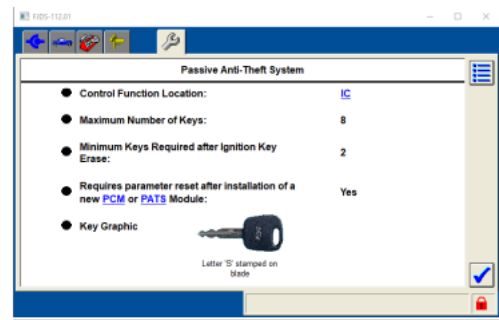
7. A session screen will appear. Navigate to the read tool box tab in the top left.



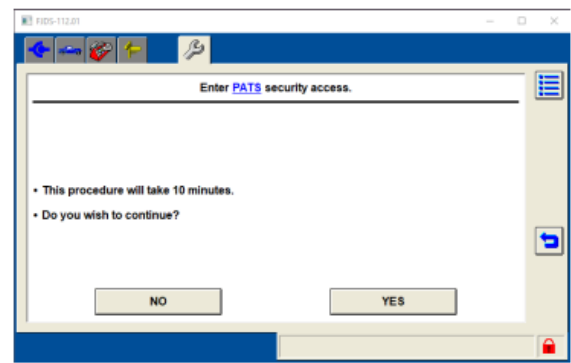
8. Select the “PATs Functions” menu option that appears and click the check box to enter. (Note: On the Ford IDS system the “PATs Functions” menu option will be in the sub-menu “Body”).



9. You will be redirected to this page that indicates the compatible key type for your vehicle. In this case, a 2002 Ford Mustang needs this type of key in order for the key programming to work. If you have a different type of key other than what your programmer is showing, it will not work and the computer will not recognize the key. Click the check box if the key type that you have is correct.



10. The system now indicates the **mandatory 10-minute waiting period** before the key programming can begin. Click yes. However, this procedure will not start correctly if your vehicle has issues such as bad transceiver, bad PATs module, or bad cluster.



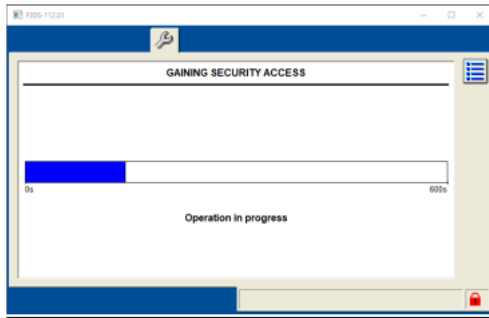


FLAGSHIP ONE

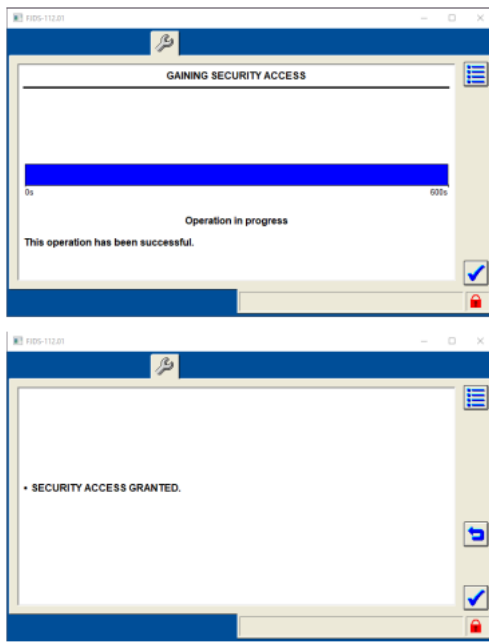
19 Wilbur Street
Lynbrook, NY 11563

Phone No. (516) 766-2223
Fax No. (347) 475-1540

11. Wait for 10 minutes.

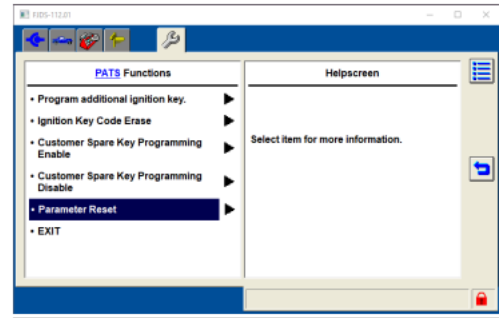


12. A confirmation message “This operation has been successful” will appear. SECURITY ACCESS GRANTED will then display that verifies that the PATS menu can be accessed.

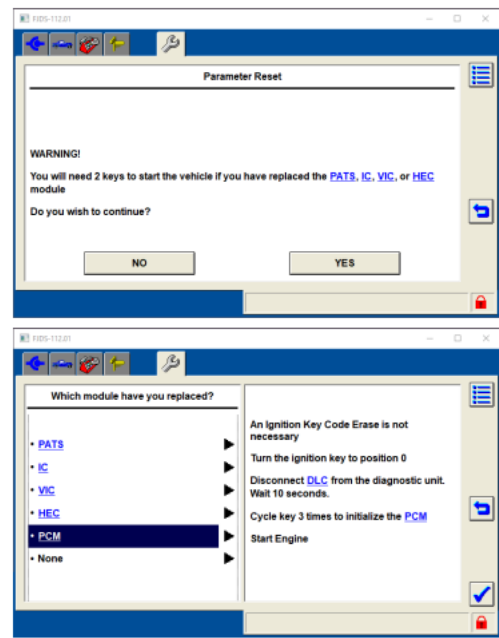


13. PATS menu is shown below. This gives options such as adding new keys, erasing the old keys on the computer or PATS module, parameter reset, etc. A parameter reset needs to be performed in order to properly program the keys. This is because the keys are stored in the cluster and the reset informs the cluster that a new

computer was installed and new keys need to be reprogrammed.



14. Click the parameter reset option and a reminder message will show that states that a parameter reset is required whenever an engine control module or the instrument cluster is replaced. The reset will erase keys stored in the cluster. Click the YES option. In some instances, the module replaced will be asked. Select PCM.



15. The Ford FJDS or IDS system will erase the keys from the cluster and will inform that the operation has been successful. Another operation may appear which is normal.

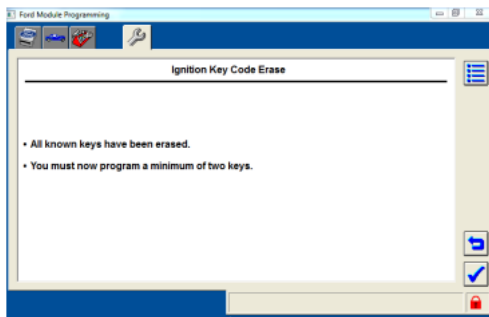
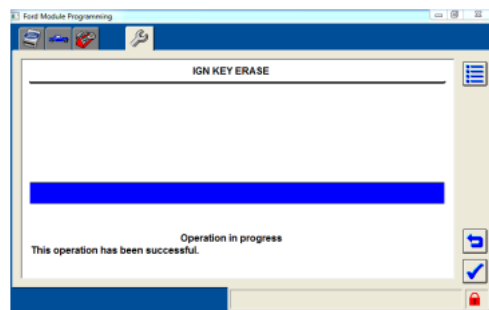
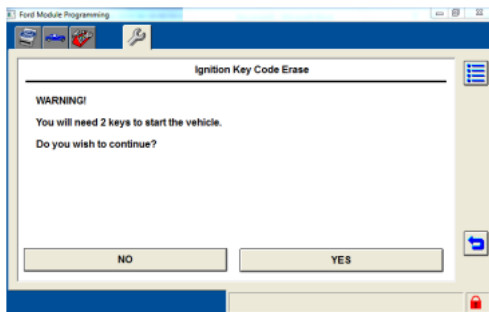


FLAGSHIP ONE

19 Wilbur Street
Lynbrook, NY 11563

Phone No. (516) 766-2223
Fax No. (347) 475-1540

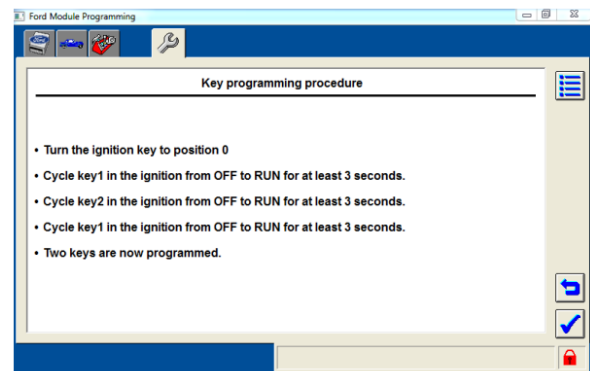
16. The system will now specify that 2 keys need to be programmed before the vehicle can start. The next prompt will give the option to erase the old key memory from the PCM. This clears the PATS system for the keys to be cycled in.



17. The next screen that will appear may vary depending on the vehicle. Here are the possible options:
- CYCLE KEY 1 IN THE IGNITION FROM OFF TO RUN FOR AT LEAST 6 SECONDS.
CYCLE KEY 2 IN THE IGNITION FROM OFF TO RUN FOR AT LEAST 6 SECONDS.

TWO KEYS ARE NOW PROGRAMMED.

- CYCLE KEY 1 IN THE IGNITION FROM OFF TO RUN FOR AT LEAST 3 SECONDS.
CYCLE KEY 2 IN THE IGNITION FROM OFF TO RUN FOR AT LEAST 3 SECONDS.
CYCLE ANY OTHER ADDITIONAL KEYS IF YOU WANT THEM TO BE PROGRAMMED.



The PATS light should be solid when the first key is inserted. After 3 or 6 seconds, remove the first key and insert the second key. The light should stay solid for about 3 seconds before the light goes off.

If the PATS light is flashing rapidly, check your key to see if the transponder in the key is still functional. A flashing light usually indicates that a signal is not being picked up from the key.