



File Code: 1950; 2820
Date: July 5, 2017

Dear Friends,

The Forest Service is proposing to approve a Surface Use Plan of Operations (SUPO) for the Alta Mesa Raven Forest #10 well pad. Approval of the new SUPO will authorize Alta Mesa to conduct surface operations associated with drilling, testing, and completing a new 5 acre hydrocarbon well. Additionally, the Forest Service is also proposing to issue two special use permits for the pipeline and electrical Rights-of-Ways (ROW) that will serve the well. Combined the project will include 16.5 acres for the well pad, access road, and two ROW's. The project is located in Montgomery County in compartment 21 just north of FM 1375 W., approximately 11.5 miles west of New Waverly, TX (see map).

Surface Use Plan of Operations - SUPO

The Raven Forest #10 is an exploratory well that will serve to develop a hydrocarbon reserve that is federally owned and currently leased to Alta Mesa. Because the mineral estate is federally owned, a permit from the Bureau of Land Management (BLM) is required. As a part of that permitting process the Forest Service is responsible for working with the BLM to approve the SUPO associated with the BLM's permit.

The pad location was initially selected by Alta Mesa through analysis conducted from a 3D seismic project in 2011. Information gathered from the survey identified a high potential for a hydrocarbon deposits at or near the selected location. The Forest Service has worked with Alta Mesa to tentatively finalize the pad location that will maintain the visual aesthetics associated with the FM 1375 corridor. The tentative location should aid in the minimization of resource impacts by maximizing the utilization of an existing opening while maintaining a safe and useable location. The well pad is located atop a small hill overlooking the FM 1375 ROW. The combination of the elevation grade difference and the addition of a beauty strip located between the well pad and the highway will help to preserve the visual aesthetics associated along the highway.

The well pad will be accessed via an already existing Forest Service road (NFSR 2203) to the maximum extent possible. However, the access road does separate from NFSR 2203 several hundred feet in from the intersection of FM 1375 thereby establishing a new ROW. The total length of the access road will be approximately 608 feet and will be 30 feet wide and will share approximately ten feet of ROW with the pipeline ROW.

The standard National Forest & Grasslands in Texas clauses and attachments identified in Appendix B of the Revised Land and Resource Management Plan for NFGT will be utilized. Additionally, due to the projects location in proximity to recreational use such as trail riding, scenic driving, and hunting in conjunction with an expanding range of a Threatened Species (species identified on the U.S. Fish and Wildlife Threatened & Endangered Species list) additional noise restrictions will be implemented once the well is completed.



Special Use Permits

The pipeline will be located in the southern portion of the FM 1375 ROW and will travel west to Osborne road. The pipeline will then cross Osborne road to the western ditchline and proceed south to tie into an already existing pipeline for a total length of approximately 12,775 feet on Forest Service property. The ROW will be 30 feet wide but will share approximately 18 feet of ROW with existing permitted road ROW's. Although the permit will include approximately 8.78 acres of ROW, the total new disturbance will only be approximately 3.51 acres.

The underground powerline will be located in the north ditchline of the FM 1375 ROW. The line will originate approximately 2,000 feet west of the FM 1375 and Osborne road intersection where an existing powerline crosses the FM 1375 ROW. The total length of the new ROW will be approximately 5,113 feet long by 20 feet wide for approximately 2.35 acres. However, just like with the pipeline, the ROW will be partially shared by an already existing ROW in the FM 1375 corridor. Because the line will be installed underground no new disturbance is anticipated.

Both the pipeline and powerline cross several jurisdictional wetlands regulated by the U.S. Army Corps of Engineers. These locations in addition to several small streams will be horizontally directional drilled under to minimize impacts to the streams and wetlands. These areas will also have a special designation for annual maintenance needs that will prohibit mechanical or chemical treatment of woody vegetation.

Regular soil erosion control and Non-Native Invasive Plant Species (NNIPS) checks will be conducted. Treatments identified in the 2008 NNIPS Environmental Assessment for the National Forests and Grasslands in Texas (NFGT) will be authorized on a case by case scenario with the authorized officer's approval.

Written responses may be submitted to Warren Oja, District Ranger, Attn: *Alta Mesa USA-Raven #10 SUPO*, Sam Houston National Forest, 394 FM 1375 W. New Waverly, TX 77358. Hand-delivered responses may be received within our normal business hours of 8:00 am to 4:30 pm Monday through Friday, excluding holidays. Responses may be mailed electronically to our office in a common digital format such as an email message, plain text (.txt), rich text format (.rtf), or Word (.doc) at comments-southern-texas-samhouston@fs.fed.us with **Subject: Alta Mesa USA-Raven #10 SUPO**. Although always welcome, please send us your comments by **July 31, 2017**.

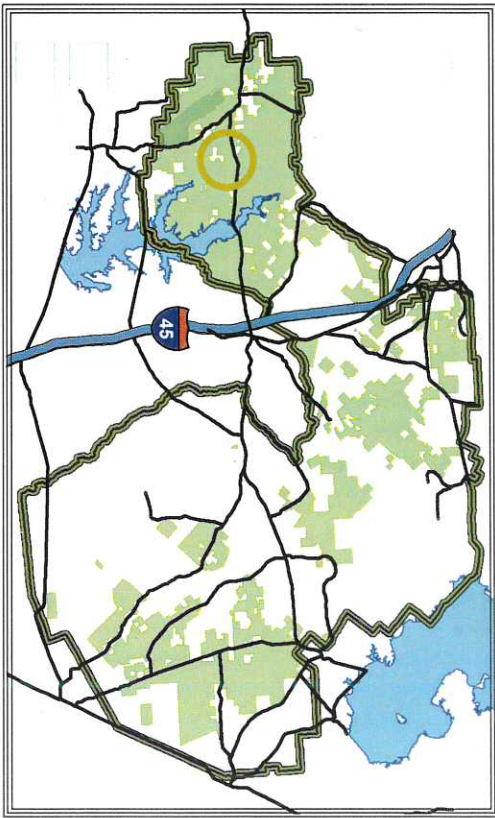
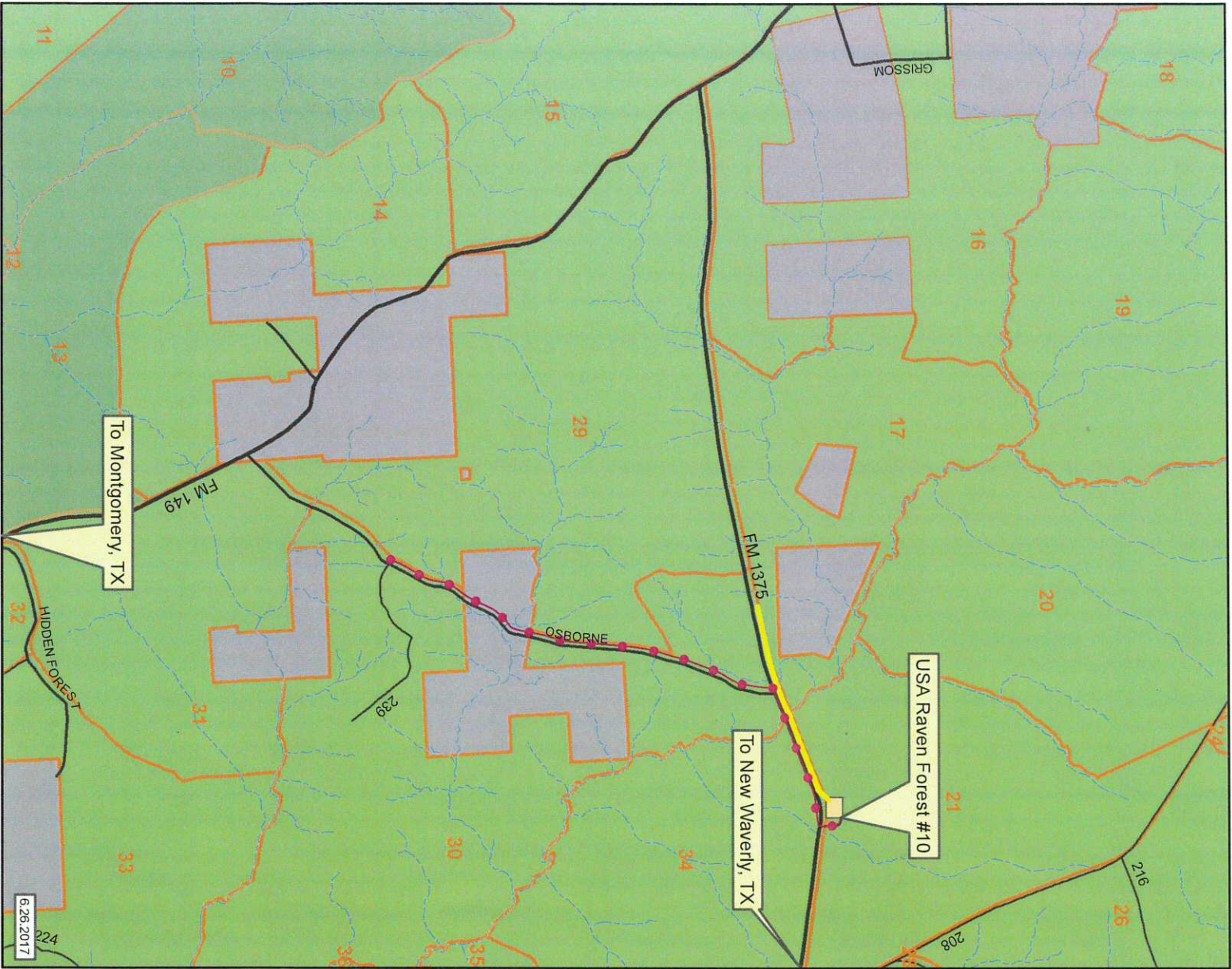
For additional information concerning the proposal, contact Frank Stranimier at the Sam Houston National Forest, 394 FM 1375 West, New Waverly, TX 77358 or telephone (936) 344-6205.

I appreciate your interest and participation in this process.

Sincerely,


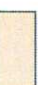





WARREN L. OJA
District Ranger



The Forest Service uses the most current and complete data available. GIS data and product accuracy may vary. They may be developed from sources of different accuracy, accurate only at certain scales, based on modeling or interpretation, or incomplete while being created or revised. Using GIS for products other than those for which they were created, may yield inaccurate or misleading results. The Forest Service reserves the right to correct, update, modify, or replace, GIS products without notification. For more information contact: Frank Straninier, Sam Houston National Forest.

Alta Mesa USA Raven Forest #10

-  Raven Forest 10 Well Pad
-  Raven Forest 10 Access Road
-  Underground Electric Line
-  Pipeline ROW
-  Little Lake Creek Wilderness



USFS Property

